

# PicBlock

# 3.0

by CinchWorks

# User Guide

## Table of Contents

Quick Start .....	2
Checking for Updates .....	3
Filtering Images .....	4
Filtering Words .....	4
Unblocking Blocked Content.....	5
Changing PicBlock's content filtering sensitivity .....	5
Changing the Notification Prompt .....	6
The URL Whitelist.....	7
The URL Blacklist .....	9
The Words Blacklist .....	11
Security Settings .....	13
Logging.....	15
Enterprise Installations.....	16
Uninstalling PicBlock .....	16

## Quick Start

1. Download and install PicBlock following according to the instructions available on the PicBlock website. You will be asked to reboot your computer after the installation has completed
2. PicBlock will run automatically each time your computer starts. You will see the PicBlock icon in the system tray, or 'systray', in the lower right corner of your desktop [Figure 1]



Figure 1 – PicBlock Icon

3. A dialog will appear whenever an objectionable image or words are encountered while surfing the web or reading e-mail [Figure 2]



Figure 2 – Blocked Content Notification Dialog

4. Blocked images will be replaced by pixelated versions of the original image [Figure 3]

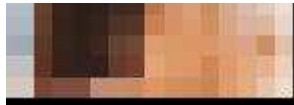


Figure 3 – Pixelated Image

5. The entire page will be blocked if sexually explicit words are found.
6. To unblock a benign content that was incorrectly blocked, either:
  - Click on the hyperlink inside the blocked content notification dialog, or
  - Press the Control + F12 key on your keyboard, or
  - Right-click on the PicBlock systray icon and select "Unblock" from the popup menu [Figure 4]

Note: After you unblock content, you must refresh your browser or e-mail client window (typically the F5 key)

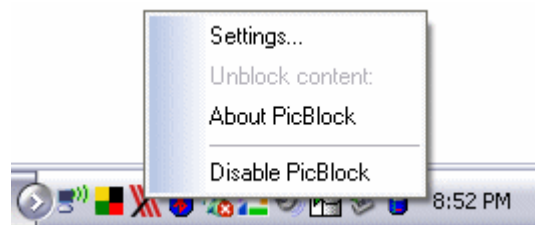


Figure 4 – PicBlock Menu

7. You can disable PicBlock at any time by right-clicking on the PicBlock systray icon and selecting "Disable" from the popup menu [Figure 4]

## Checking for Updates

PicBlock can be configured to check for updates on a monthly basis. Alternatively you can manually check for updates at any time. A notification prompt will appear if an update is available.

To enable recurring monthly automatic update checking:

1. Double-click on the PicBlock systray icon [Figure 1]
2. On the “**Configuration**” page, check the box next to **Automatically check for updates once a month**.
3. Click OK

To manually check for updates:

1. Double-click on the PicBlock systray icon
2. On the “**Configuration**” page, click the **Check Now** button [Figure 5]
3. A prompt will appear only if a new version is available (otherwise no prompt will display).
4. Click OK to exit the Configuration page

Note: PicBlock will only check for updates when running under an administrator account, which prevents user-experience problems, such as firewall notifications, from occurring on non-privileged user accounts.

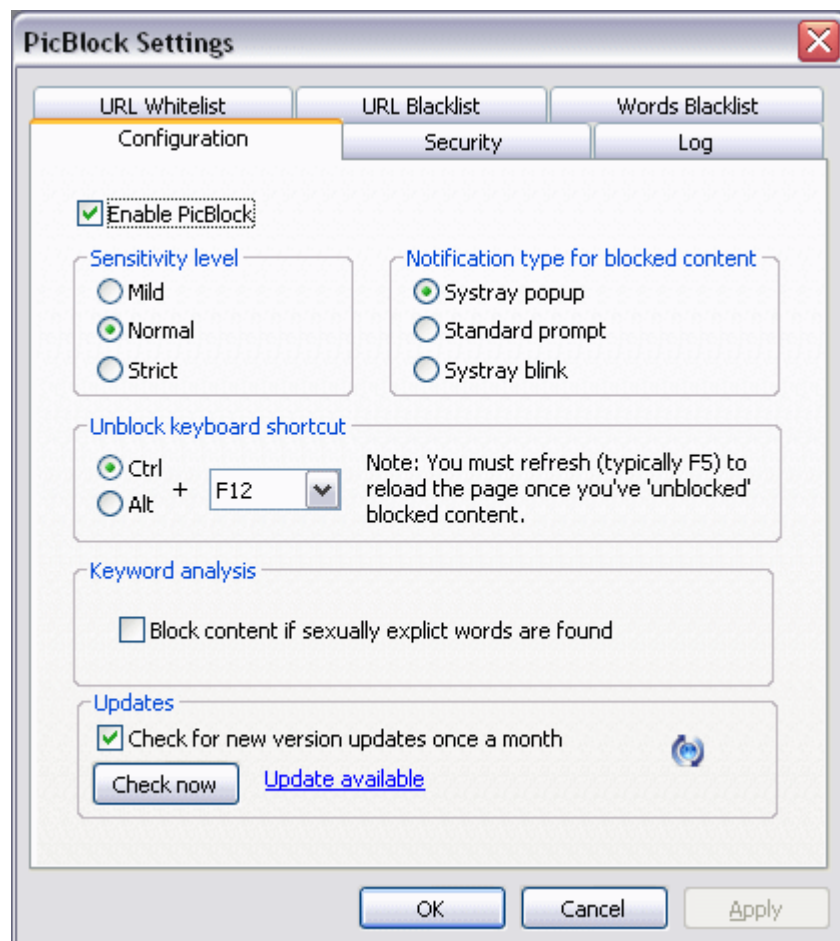


Figure 5 – Configuration Page

## Filtering Images

PicBlock employs a “three-dimensional matrix” and other sophisticated programming techniques to detect skin tone content in online images. Various algorithms and thresholds are also employed to reduce the number of false positives (incorrect classification of a benign image as pornographic) including a face detection algorithm. This feature prevents portraits, which are pictures of someone’s face, with otherwise high quantities of skin tones, from being incorrectly classified as porn.

If an image is deemed objectionable, it will be replaced by a pixilated version of the same image. If enough images on a page are considered objectionable, PicBlock will block ALL remaining images, unless a particular image has a very low probability of being porn.

PicBlock’s image filtering technology is enabled by default when running.

To turn off filtering, do the following:

1. Double-click on the PicBlock systray icon
2. On the **Configuration** page, uncheck the box next to **Enable PicBlock**
3. Click OK

Note: When PicBlock is disabled you can still access the Internet; however **no image or word filtering will occur**. To prevent unauthorized users from disabling PicBlock, you should require a [password](#) for disabling PicBlock.

## Filtering Words

PicBlock supplements its image filtering capabilities by reviewing all *words* in the requested web page. If a word\* is found in PicBlock’s word blacklist, PicBlock will block the page from loading.

\* Depends on the word(s) found and weighting of those words.

To enable or disable Word filtering:

1. Double-click on the PicBlock systray icon
2. Select the **Configuration** page
3. Check or uncheck the option to **Block content if sexually explicit words are found**
4. Click OK

## Unblocking Blocked Content

People often differ in their classification of what's considered an 'objectionable' image and what's not. An image considered only risqué by one person may be considered pornographic by another. How much more difficult is it then, to programmatically determine whether an image truly is pornographic! A picture of a naked baby in a bathtub may be perfectly benign; however due to the large quantity of skin tones, it will still be blocked by PicBlock.

PicBlock employs various techniques and algorithms to help lower the number of benign, high skin-tone images from being blocked, such as pictures made up largely of a person's face. Even so, PicBlock errors on the side of caution; therefore there is a good chance it will block one or more images on a page that you know for a fact to be harmless.

Fortunately, PicBlock lets you unblock images or entire pages that have been wrongly classified as porn.

### To unblock incorrectly blocked content:

1. Click on the “**unblock**” link displayed in the popup message that appears when the image is blocked.
2. If the popup message disappears (it does after a few seconds), then right-click on the PicBlock systray icon and click **Unblock content**
3. Now refresh your page (**F5** key in most browsers) to display the previously blocked content.

Once you unblock content, that page's URL is automatically added to PicBlock's [URL Whitelist](#).

## Changing PicBlock's Content Filtering Sensitivity

You can lower PicBlock's overall sensitivity threshold to decrease the amount of false positives. However doing so will increase the odds that objectionable content may slip through PicBlock's filter.

### To lower PicBlock's sensitivity level:

1. Double-click on the PicBlock systray icon
2. Select the **Configuration** page
3. Change the **Sensitivity level** to the desired level: **Normal** (the default), **Mild**, or **Strict**
4. Click OK

Note: Many internal values are affected depending on the sensitivity level chosen.

## Changing the Notification Prompt

PicBlock provides three different types of notification prompts for indicating that content was blocked.

- A systray notification prompt. This is the default notification prompt. A small popup appears in the lower right corner of your desktop.
- A standard prompt. This is more obtrusive than the systray notification, as the prompt is displayed in middle of the desktop.
- Blinking system tray prompt. This is even less obtrusive than the default systray prompt, flashing the PicBlock system tray icon to indicate that content has been blocked.

To change the notification prompt type:

1. Double-click on the PicBlock systray icon
2. Select the **Configuration** page
3. Select one of the **Notification types for blocked content**
  - a. Systray popup (default)
  - b. Standard prompt
  - c. Systray blink
4. Click OK



**Figure 6 – Systray notification prompt**

## The URL Whitelist

Web page addresses (URLs) placed in PicBlock's URL Whitelist will *not* be filtered for objectionable content. The purpose of this feature is to stop PicBlock from filtering web pages you commonly visit and know to be safe.

Each time you *unblock* incorrectly blocked content, the web page that contained that content is automatically added to the URL Whitelist, and is no longer filtered (as it's reasonable to assume the URL is safe). There are two exceptions to this rule:

- If the setting **Automatically add URLs for unblocked sites to the URL Whitelist** is unchecked in PicBlock Setting's Security page, or
- If the URL belongs to one of the many image search engines, such as [images.google.com](https://images.google.com)

### To turn off the automatic addition of URLs to the URL Whitelist:

1. Double-click on the PicBlock systray icon
2. Select the **Security** page
3. Uncheck the box next to **Automatically add URLs for unblocked sites to the URL Whitelist**
4. Click OK

### To manually add a URL to the URL Whitelist:

1. Double-click on the PicBlock systray icon
2. Select the **URL Whitelist** page
3. Click **Import & Add**
4. Type one or more URLs to add it to the list. URLs most following the standard URL naming conventions as defined in RFC 1738. For example [www.host.com](http://www.host.com)
5. To enter multiple URLs, hit **Enter** after each one.
6. When finished click OK
7. Click OK again to exit PicBlock's configuration page.

Note: You can add up to 100 URLs at a time, up to 255 characters each in length.

### To remove a URL from the URL Whitelist:

1. Double-click on the PicBlock systray icon
2. Select the **URL Whitelist** page
3. Select the URL you want to delete by clicking the URL once
4. Click **Remove Selected** to remove the URL
5. To remove all URLs from the list, click **Remove All**

To facilitate enterprise installations, PicBlock can *export* a pre-existing URL Whitelist that you can later *import* into another PicBlock installation.

### To export an existing URL from the URL Whitelist :

1. Double-click on the PicBlock systray icon
2. Select the **URL Whitelist** page

3. Click **Export**
4. Provide a name for the exported list
5. Click **Save** to save the list to the desired location
6. Click OK

To import an existing URL from the URL Whitelist:

1. Double-click on the PicBlock systray icon
2. Select the **URL Whitelist** page
3. Click **Import & Add**
4. Locate the filename for the list you previously exported
5. Click **Open** to import the list
6. Click OK

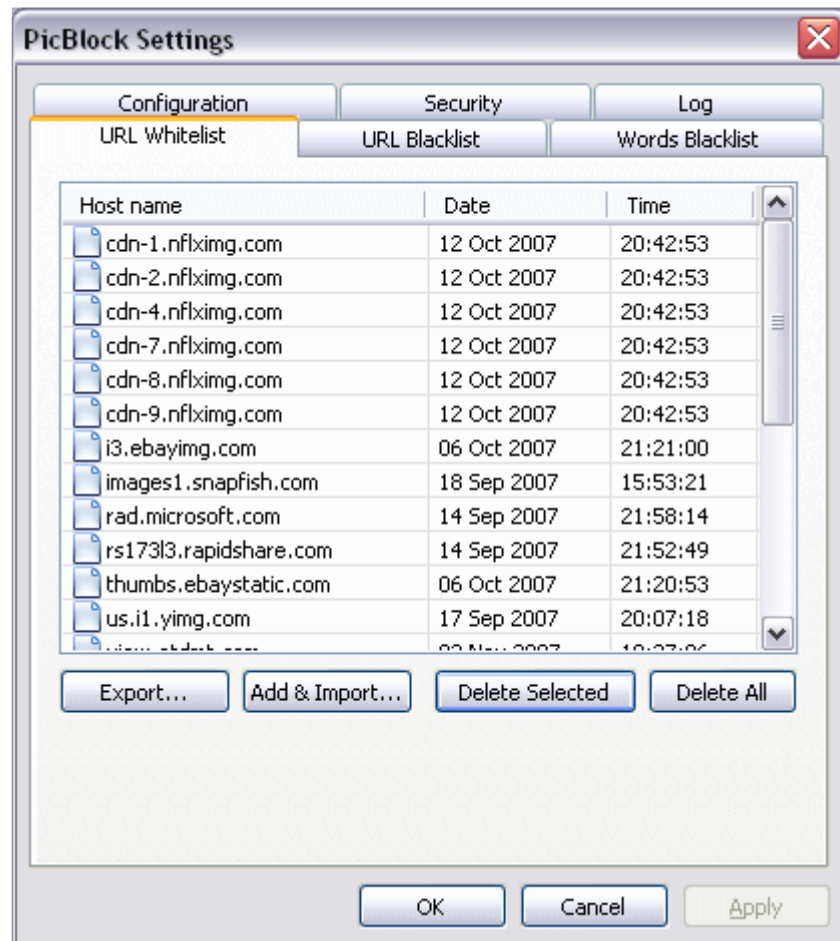


Figure 7 – URL Whitelist

## The URL Blacklist

The URL Blacklist is like a pre-filter, blocking any URLs on the list outright, without checking for objectionable images or Words first.

### To manually add a URL to the URL Blacklist:

1. Double-click on the PicBlock systray icon
2. Select the **URL Blacklist** page
3. Click **Import & Add**
4. Type one or more URLs to add it to the list. URLs must follow the standard URL naming conventions as defined in RFC 1738. For example [www.host.com](http://www.host.com)
5. To enter multiple URLs, click **Enter** after each one
6. Click OK when finished

Note: You can add up to 100 URLs at a time, up to 255 characters each in length.

### To remove a URL from the URL Blacklist:

1. Double-click on the PicBlock systray icon
2. Select the **URL Blacklist** page
3. Select the URL you want to delete by clicking the URL once
4. Click **Remove Selected**
5. To remove all URLs from the list, click "Remove All"
6. Click OK

To facilitate enterprise installations, PicBlock can export an existing URL Blacklist that you can later import into another installation of PicBlock.

### To export an existing URL Blacklist:

1. Double-click on the PicBlock systray icon
2. Select the **URL Blacklist** page
3. Click **Export**
4. Type in a name for the exported list
5. Click **Save** to save the list
6. Click OK

### To import an existing URL Blacklist:

1. Double-click on the PicBlock systray icon
2. Select the **URL Blacklist** page
3. Click **Import & Add**
4. Locate the filename for the list you previously exported
5. Click **Open** to import the list
6. Click OK

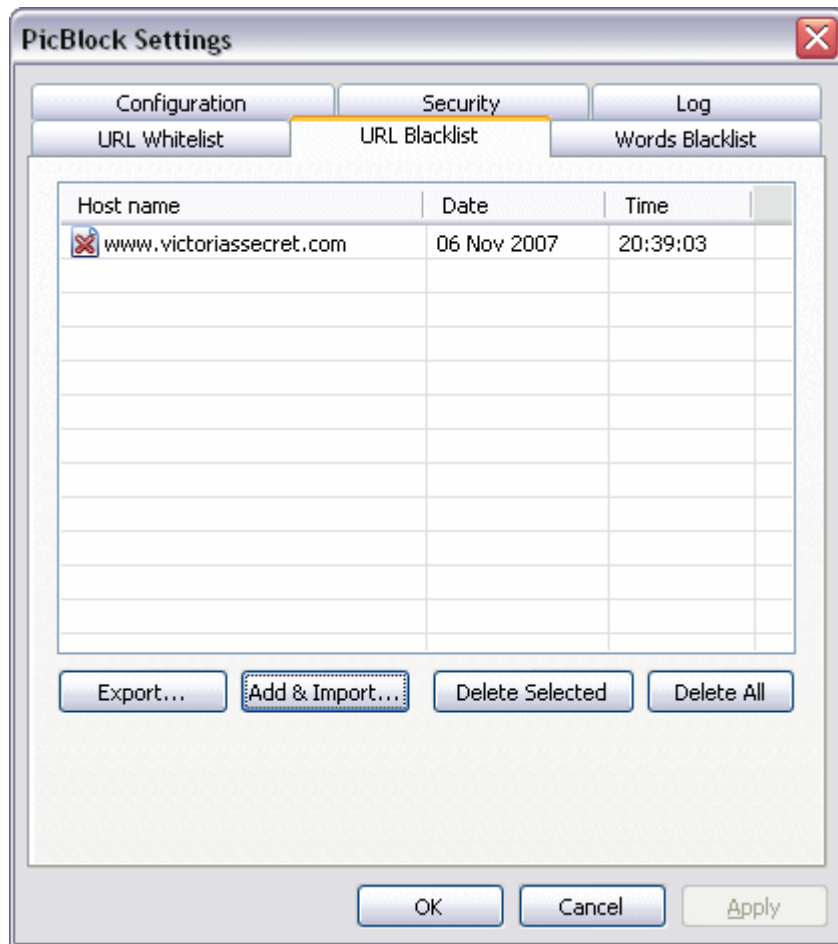


Figure 8 – URL Blacklist

## The Words Blacklist

PicBlock's built-in Word blacklist contains thousands of sexually explicit words in many languages. New words can be added, and even removed from the list; however the built-in list is not accessible for general editing or for review.

### To add a word to the Words Blacklist:

1. Double-click on the PicBlock systray icon
2. Select the **Words Blacklist** page
3. Click **Import & Add**
4. Type in the word you want added to the blacklist
5. To enter multiple words, hit **Enter** after each one
6. Click OK when finished, then OK again to exist the Configuration page

### To remove a word from the built-in Words Blacklist:

1. Double-click on the PicBlock systray icon
2. Select the **Words Blacklist** page
3. Click **Import & Add**
4. Type the word you want removed from the built-in blacklist, preceded by a minus sign: '-'
5. Click OK when finished, then OK again to exist the Configuration page

The minus sign before the word tells PicBlock to not filter for that word. This only works if the word being removed already exists on the built-in blacklist.

### To remove a user-added word from the Words Blacklist:

1. Double-click on the PicBlock systray icon
2. Select the **Words Blacklist** page
3. Select the word you want to remove
4. Click **Remove Selected**, or **Remove All** to remove all user-defined words
5. Click OK

To facilitate enterprise installations, PicBlock can export a pre-existing Words Blacklist that you can later import into another installation of PicBlock.

### To export an existing Words Blacklist:

1. Double-click on the PicBlock systray icon
2. Select the **Words Blacklist** page
3. Click **Export**
4. Type in a name for the exported list
5. Click **Save** to save the list
6. Click OK

### To import an existing Words Blacklist:

1. Double-click on the PicBlock systray icon
2. Select the **Words Blacklist** page

3. Click **Import & Add**
4. Locate the filename for the list you previously exported
5. Click **Open** to import the list
6. Click **OK**

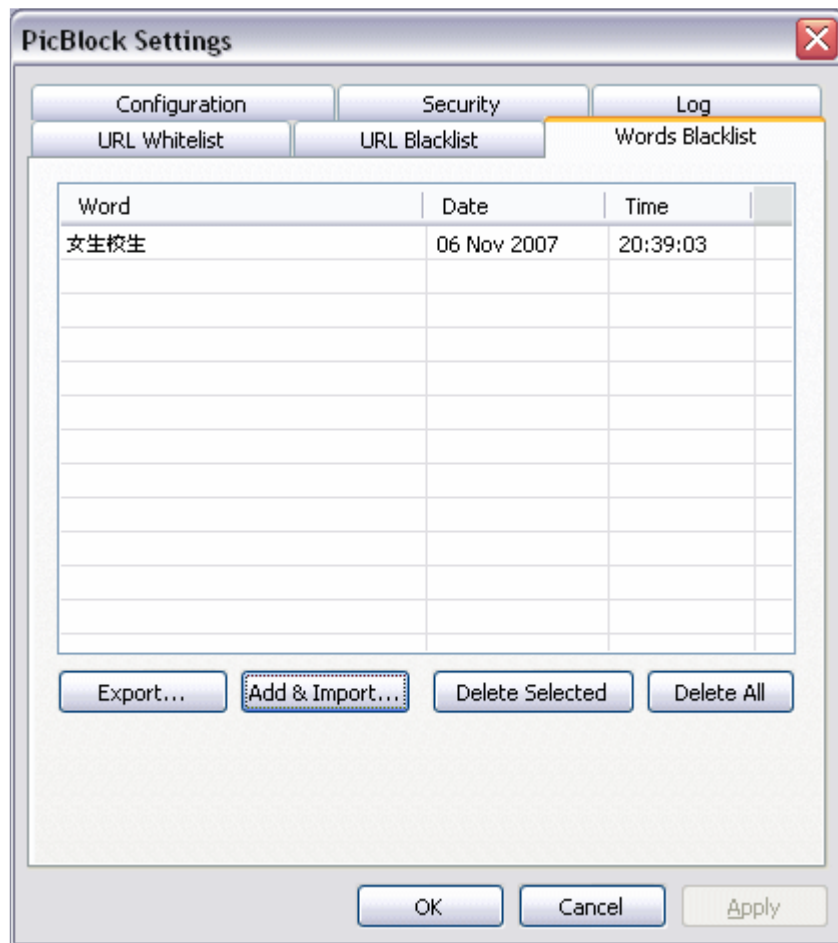


Figure 9 – Words Blacklist

## Security Settings

PicBlock provides various controls to prevent unauthorized users from making changes. Those controls include the following:

- Requiring an administrator password for unblocking images
- Requiring an administrator password for viewing PicBlock's log file
- Requiring an administrator password for changing settings
- Requiring an administrator password for disabling PicBlock
- Requiring an administrator password for uninstalling PicBlock
- Disallowing all internet access if PicBlock is forcefully disabled.
- Hiding PicBlock from the user by
  - Not showing an icon in the system tray
  - Not displaying a splash screen on startup

### To set the Administrator Password:

1. Double-click on the PicBlock systray icon
2. Select the **Security** page
3. Enter a password in the field labeled **PicBlock administrator password**
4. Confirm the password
5. Click OK

### To require a password for various scenarios

1. Double-click on the PicBlock systray icon
2. Select the **Security** page
3. Check the desired **Require password...** security option(s)

### Run PicBlock in Silent Mode:

To prevent the PicBlock systray icon and splash screen from appearing, simply check those options under the Security page:

1. Double-click on the PicBlock systray icon
2. Select the **Security** page
3. Check **Run in silent mode** and/or **Hide splash screen**

Notes: It is critical that you document the shortcut key sequence (Control + F1 by default) to access PicBlock's settings when running in silent mode. Otherwise you won't be able to access the settings dialog to make changes. You will still be prompted for a password (if set) to access the settings page. If you forget the shortcut key and can't access settings, you will need to contact PicBlock support.

When running in silent mode, no prompt or notification will occur when content is blocked. To unblock content, you must use the keyboard shortcut key, Ctrl+F12 by default, configurable in PicBlock's Configuration page.

To further prevent tampering, you should consider removing the PicBlock folder from the Start menu, as well as the Add/Remove programs entry (via the registry

HKEY\_LOCAL\_MACHINE\SOFTWARE\Microsoft\Windows\CurrentVersion\Uninstall\PicBlock\_is1). Most of PicBlock's tamper resistance measures are built-in, such as not appearing in the Task Manager process list, and other internal validation checks for dependant components (dlls, logs, etc.).

### Preventing Internet Access if PicBlock is Disabled:

With this setting checked, all internet connectivity will be disabled if PicBlock is intentionally disabled by an unauthorized user.

1. Double-click on the PicBlock systray icon
2. Select the **Security** page
3. Check "**Disallow internet access if PicBlock isn't running**"
4. OK

Notes: Although PicBlock hides it's process well, someone computer savvy can find and 'kill' the PicBlock process. However if the "Disallow internet access..." setting is checked, the user won't be able to access the internet at all, unless they uninstall PicBlock using the Add & Remove programs tool, which is next to impossible if a PicBlock administrator password has been set.

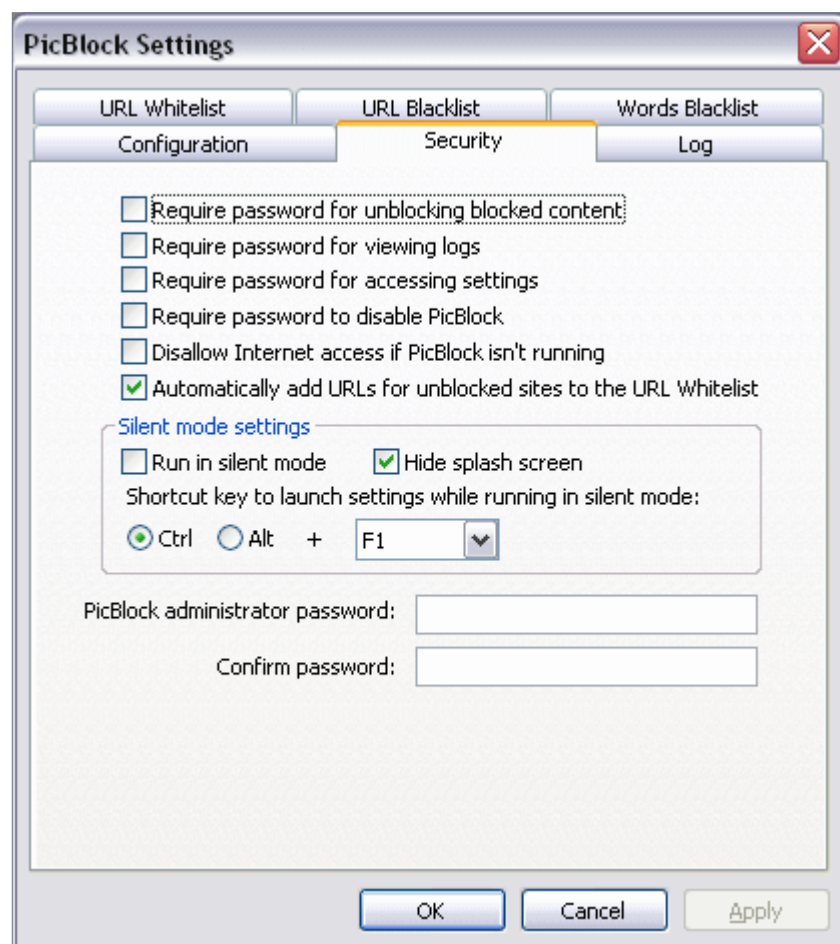


Figure 10 – Security settings

## Logging

PicBlock logs all blocking, unblocking, and errors in a tamper resistant log file.

### Viewing the log:

1. Double-click on the PicBlock systray icon
2. Select the **Log** page
3. Click on the **View Log** button
4. Enter the PicBlock Administrator password if prompted
5. Click OK

### Selecting what is logged:

By default the log records any errors, especially those caused by tampering with PicBlock's system or user-created files and registry entries. The log also records any content blocked, blocks challenged (request to unblock content), and any content unblocked. To turn off logging of blocked and unblocked actions:

1. Double-click on the PicBlock systray icon
2. Select the **Log** page
3. Uncheck the **Log when content is blocked** or **Log when content is unblocked** checkboxes.
4. Click OK

### Modifying the log location:

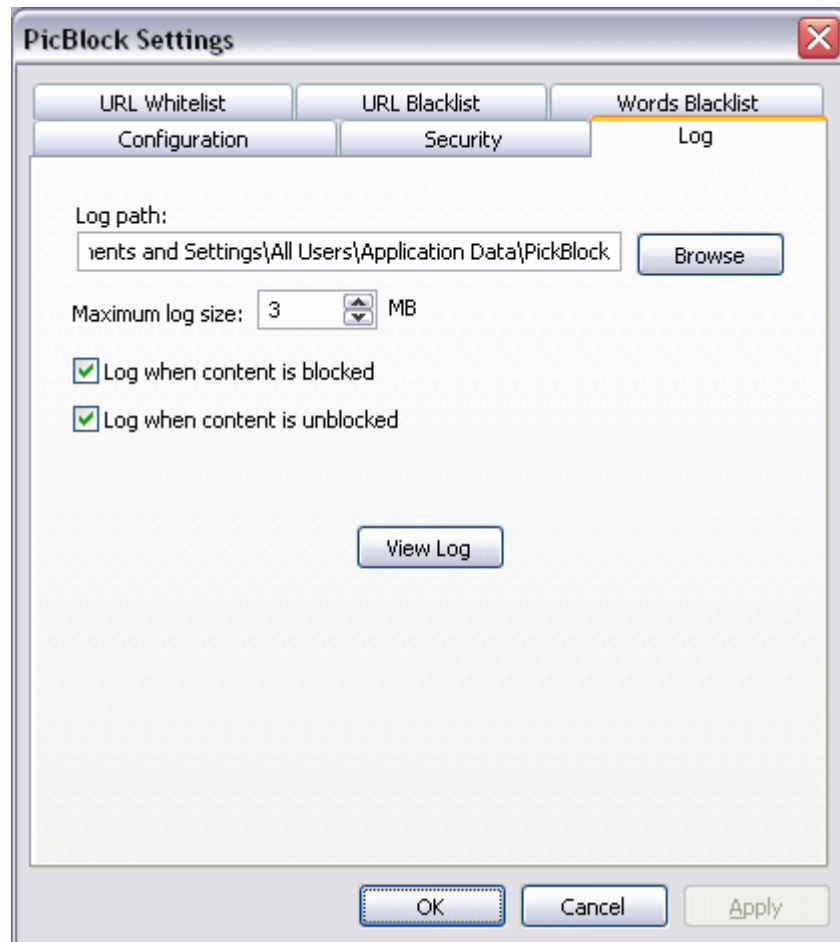
1. Double-click on the PicBlock systray icon
2. Select the **Log** page
3. Click **Browser** and select a folder or type in a folder in the **Log path** field
4. Click OK

Note: It is recommended you keep the default log path to avoid log write errors when running under non-privileged user accounts.

### Changing the maximum log size:

1. Double-click on the PicBlock systray icon
2. Select the **Log** page
3. Enter a value between 1 and 100 (value is in Megabytes) in the **Maximum log size** field
4. Click OK

Note: Once the log is full, any new entry will cause the oldest entry to be removed.



**Figure 11 - Log**

## **Enterprise Installations**

Please refer to the separate Enterprise Installation Guide (located in the PicBlock Start Menu Program group and in the PicBlock installation folder) for advanced installation instructions including silent installations and setting default administrator passwords and other PicBlock advanced configuration options.

## **Uninstalling PicBlock**

To uninstall PicBlock:

1. Open your Add or Remove Programs group (in the Windows' control panel)
2. Locate the PicBlock program group
3. Click on Remove
4. Enter the PicBlock administrator password if prompted

Note :If a PicBlock administrator password is set, the administrator password will be required for uninstalling the program. If you don't recall setting an administrator password, try continuing without entering a password (blank password). If that doesn't work, contact CinchWorks support.